

LOCAL MYTHS

2010
Eastside Projects,
Birmingham,
United Kingdom

Eastside Projects hosts the first UK solo exhibition by Tee. Local Myths is a synthesis of newly commissioned works and key recent sculptural works. The objects possess a poise and presence usually associated with post-minimalist sculpture. The quixotic setting has allusions to a number of ideologically transformative inner structures, sanctums and theosophical spaces. Tee's sculptural forms lie, stand and hang, interspersed around the space, combining unusual elements testing gravity to form a unique constellation and performance of emblematic actions and craft processes.

On the occasion of this show a catalogue was published: LOCAL MYTHS/LOVE SPELLS. The show and the booklet were generously supported by the FBKVB & de Mondriaan Stichting.



STAR-CROSSED BILLBOARD

FALLING FEATHERS
(WHITE)

FALLING FEATHERS
(BLACK)

STAR-CROSSED
Collection of 12 vessels

CRYSTALLINE FLOOR PIECES
/ HEXAGONAL

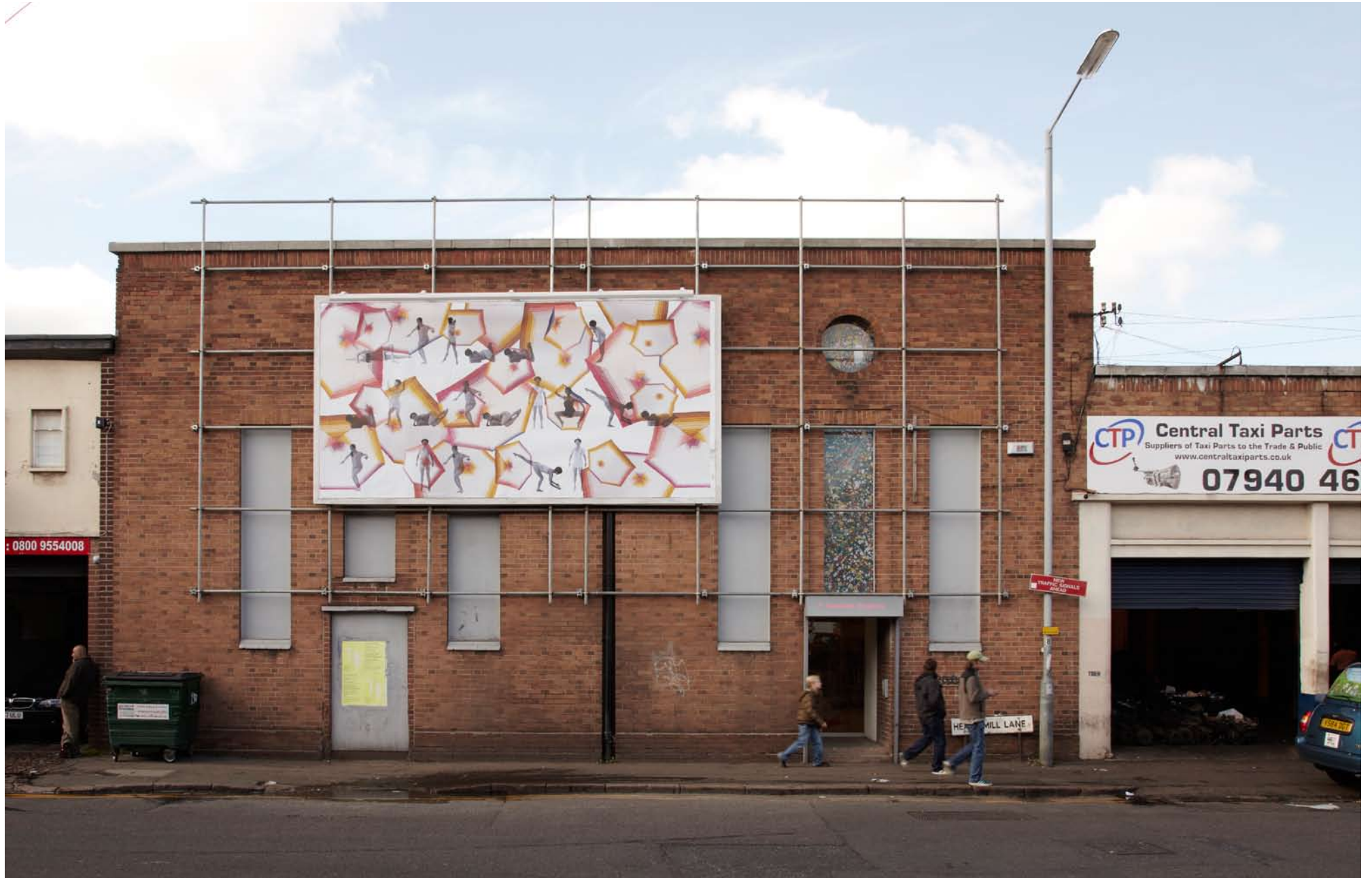
CRYSTALLINE FLOOR
PIECES / HEXAGONAL /
POPROCKS



CRYSTALLINE FLOOR PIECE
/ HEXAGONAL / POPROCKS
Hand-dyed wool
230 x 230 cm

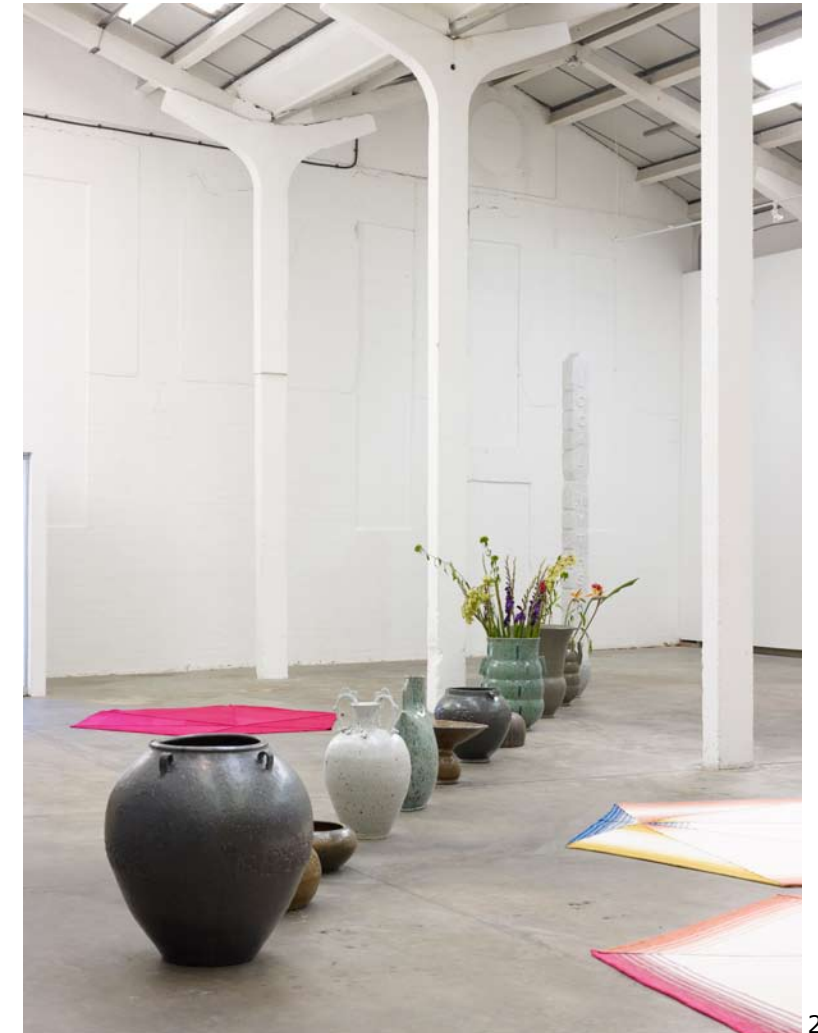


STAR-CROSSED
Exterior billboard poster



1
FALLING FEATHERS
(WHITE)
20 porcelain feathers,
wooden octagram-construction,
black rope
2.8 m x 1.4 m x 1.2 m

2
STAR-CROSSED
Collection of 12 vessels
Coiled stoneware
variable sizes



1
LOCAL MYTHS
Carrara Marble
325 x 22 x 22 cm

HAND
Diasc mounted photograph
110 x 78 x 5 cm

TRANCEND & ESCAPE
Wood fired vessel
Urn & funerary vase
60 x 34 x 34 cm

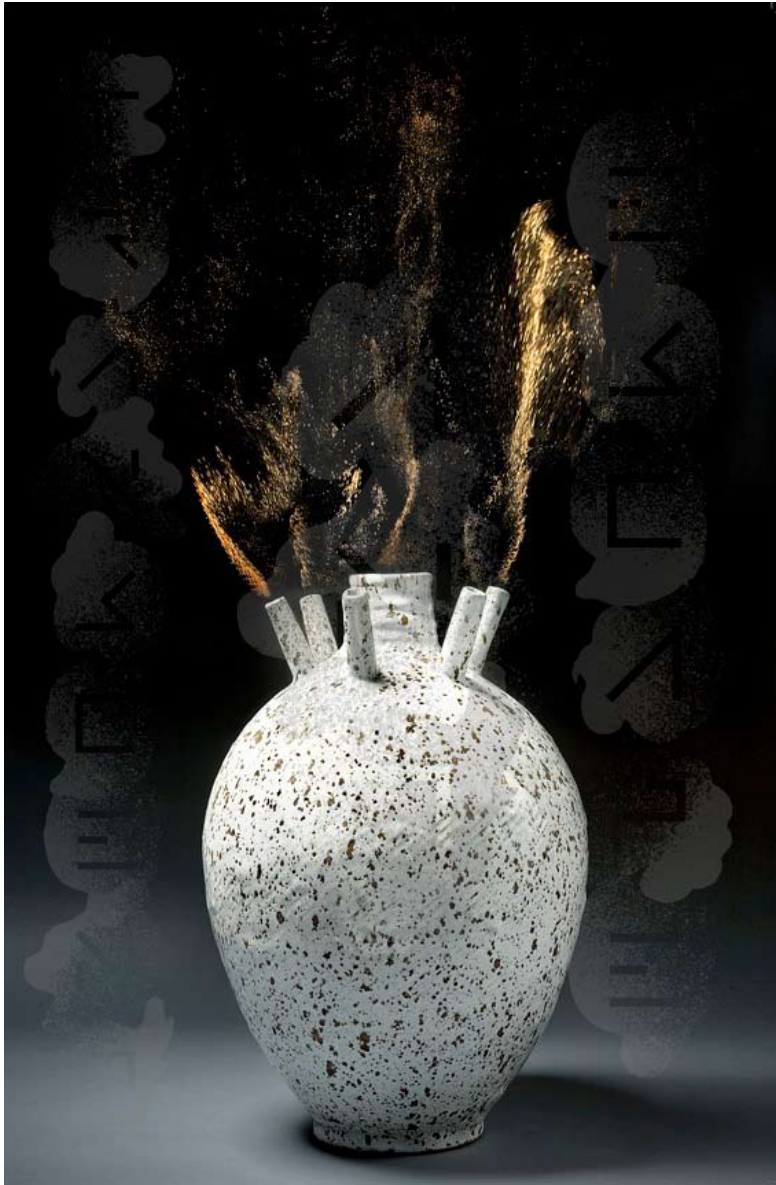
HAIR, HEART, LIVER, OVARY
Urn
62 x 33 x 33 cm

2
LOCAL MYTHS
Carrara Marble
325 x 22 x 22 cm
semi-permanent



1
TRANSCEND & ESCAPE
Silkscreen over Giclee print
on Somerset Velvet
330 gsm paper
Eastside Projects
print edition of 20
70 x 46 cm

2
HAIR, HEART, LIVER,
OVARY
Hahnemuhle Museum
Etching print
350 gsm paper
70 x 50 cm



1



2