

ETHER PLANE ~ MATERIAL PLANE

**Abstraction of a Form,
Shape or Presence
2016
Manifesta 11
Zurich, CH**

Tee's work often consist of sculptural elements activated by performance that explore the relationship between spirit and matter, soul and body. For Manifesta, Tee chose to work with an undertaker. Inside the room at Enzenbühl Cemetery Tee has created an installation connecting sculptures and collages with ethnographic artifacts—objects from different cultures used in rituals surrounding death, burial, and the transition to the afterlife. In Löwenbräu, Tee is presenting a larger installation related to these topics.

Commissioned by Manifesta 11 with the generous support of the Mondriaan Fund.



TAO MAGIC NO 1
BLACK/WHITE
glazed ceramics
30x30x15 cm

ABSTRACTION OF A FORM,
SHAPE OR PRESENCE (1)
Glazed ceramics
30x21x12 cm

African Mask
Collection Galerie Walu, CH

TAO MAGIC/
INNER PARALLEL
BLACK/WHITE
Glazed ceramic
32x22x12 cm

ETHER PLANE~
MATERIAL PLANE
Hahnemuhle Museum
etching paper
226X 130 cm



ETHER PLANE ~ MATERIAL PLANE

1
Tolai Mask
Papua New Guinea,
19th century
Ceramic, bone,
colored hair, fiber
22x16x5 cm
Collection Galerie Dierking,
CH



1

2
ABSTRACTION OF A FORM,
SHAPE OR PRESENCE (1)
Glazed ceramics
30x21x12 cm



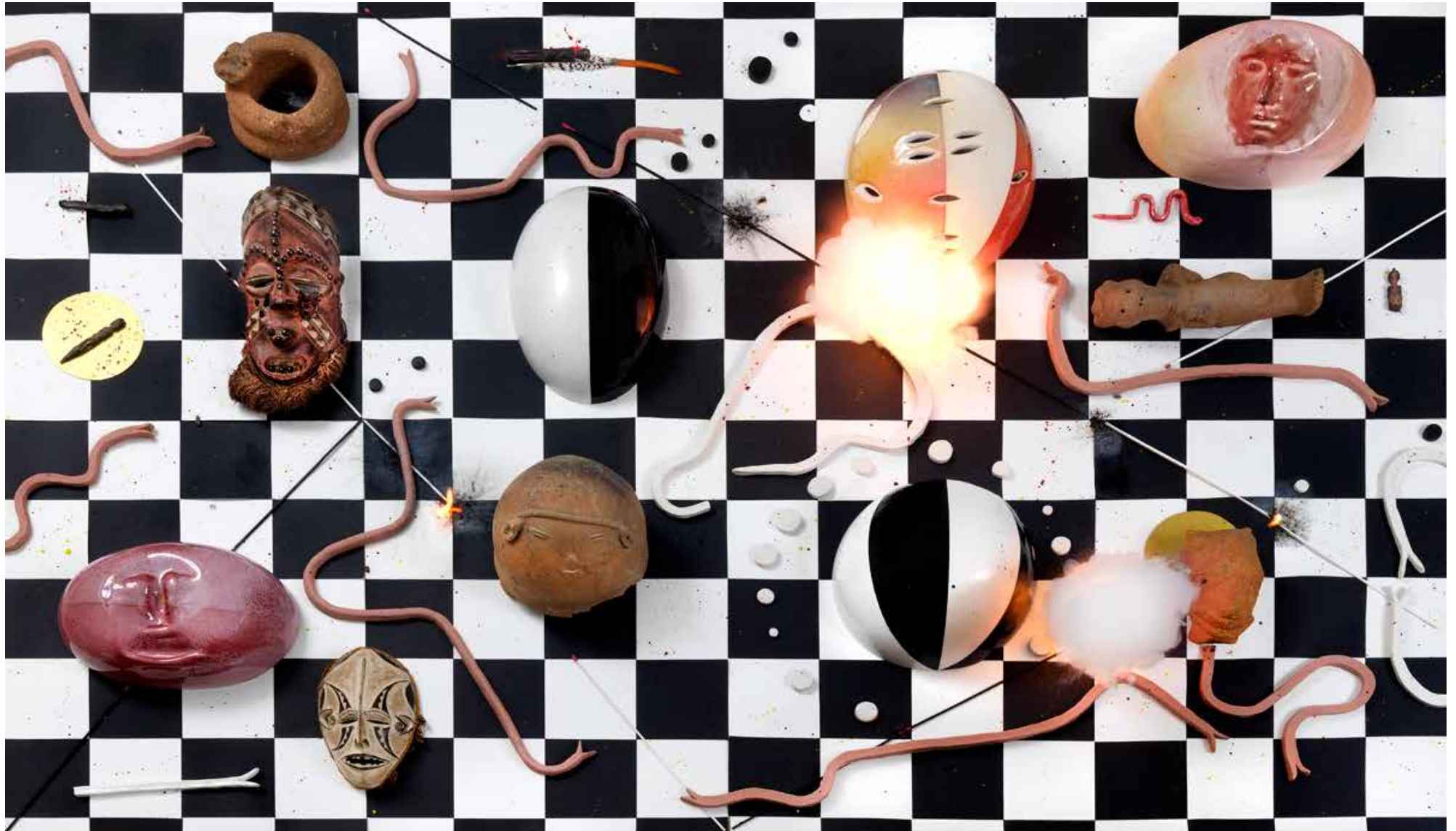
2

3
TAO MAGIC NO 2
BLACK/WHITE
Glazed ceramics
30x30x15 cm

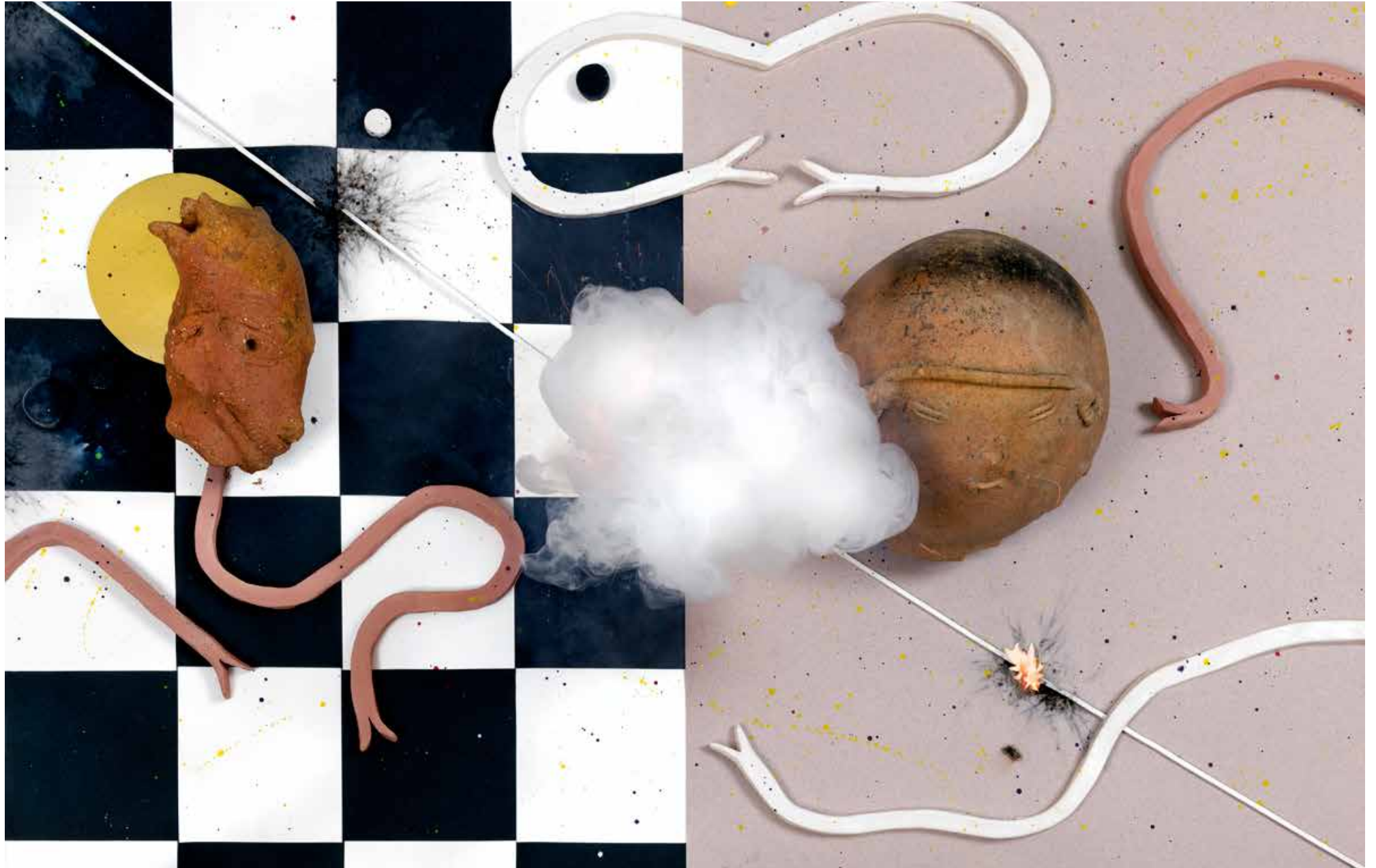


3

ETHER PLANE~
MATERIAL PLANE
Hahnemuhle Museum
etching paper, 350 gms
226 X 130 cm



ETHER PLANE~
MATERIAL PLANE
Hahnemuhle Museum
etching paper, 350 gms
Serie 2 (3 diagrams)
60x100cm



ETHER PLANE ~ MATERIAL PLANE

5/11

PERFORMANCE**ETHER PLANE ~
MATERIAL PLANE**

Duration: 2-6pm,
9-11 June, 2016
Choreography:
Jennifer Tee & Miri Lee
Dancer: Miri Lee

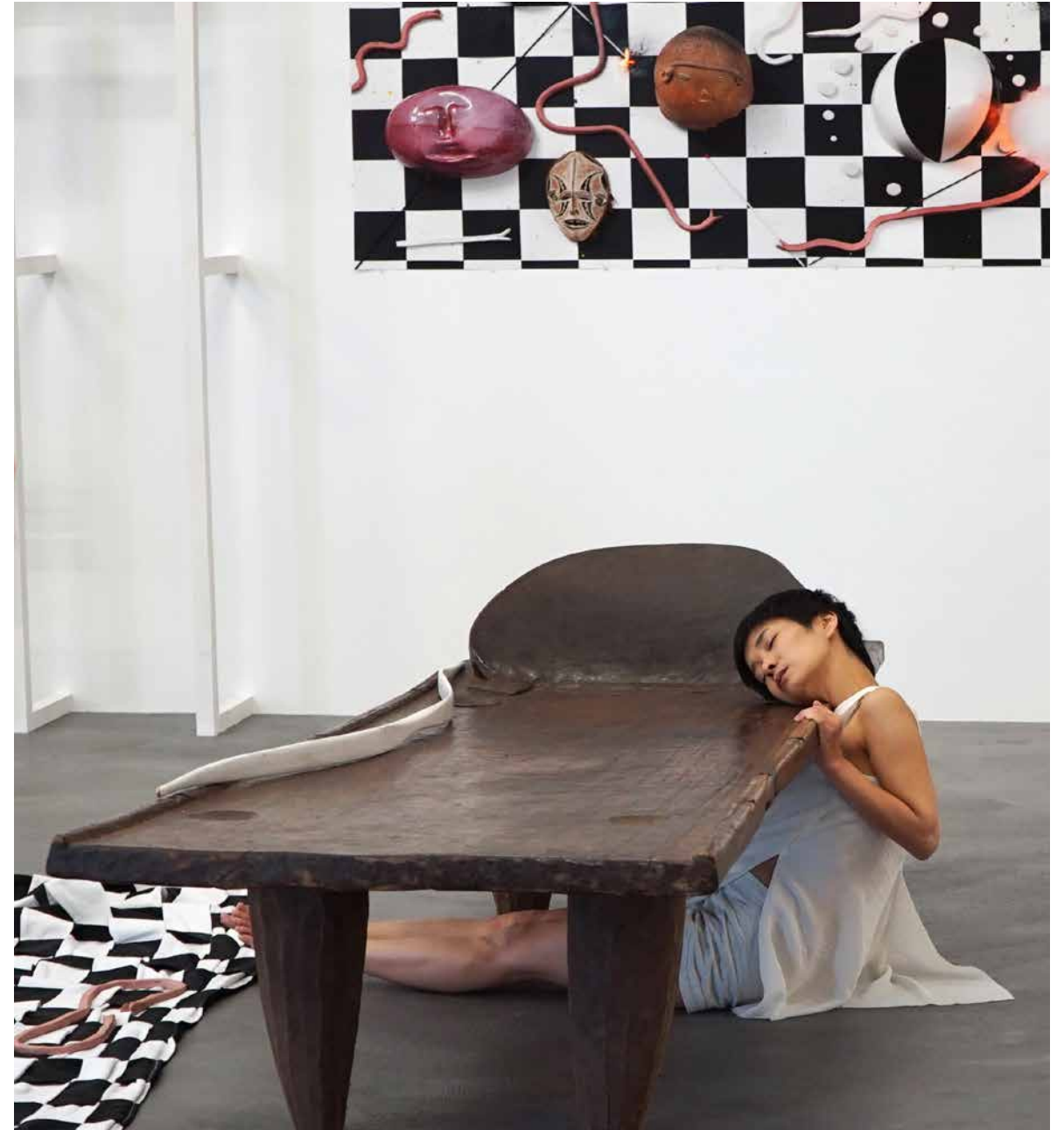


ETHER PLANE ~ MATERIAL PLANE

06/12

PERFORMANCE

ETHER PLANE ~
MATERIAL PLANE
Duration: 2-6pm



ETHER PLANE ~ MATERIAL PLANE

**Abstraction of a Form,
Shape or Presence
2016
Enzenbühl Cemetery
Zurich, CH**

For Manifesta, Tee chose to work with an undertaker, someone who deals daily with the transitory state of bodies and persons separating from a physical presence to a memory, to focus on the period between death and burial or cremation. Inside the room at Enzenbühl Cemetery where bodies lie in state, Tee has created an installation connecting sculptures and collages with ethnographic artifacts—objects from different cultures relating to or used in rituals surrounding death, burial, and—at times—the transition to the afterlife.

many thanks too:
host Rolf Steinmann, head
of cemeteries of the city of
Zurich
Christian Seliner, caretaker
of Enzenbühl Cemetery



ETHER PLANE~
MATERIAL PLANE
ABSTRACTION OF A FORM,
SHAPE OR PRESENCE

Diagrams: glazed ceramics,
ceramic lines,
ethnographic objects
Dimensions variable



ETHER PLANE ~ MATERIAL PLANE

09/12

Aufbahrung Warteraum 1

ETHER PLANE~
MATERIAL PLANE
Hahnemühle Museum
etching paper, 350 gms
Serie 1 (3 diagrams)
60x100cm

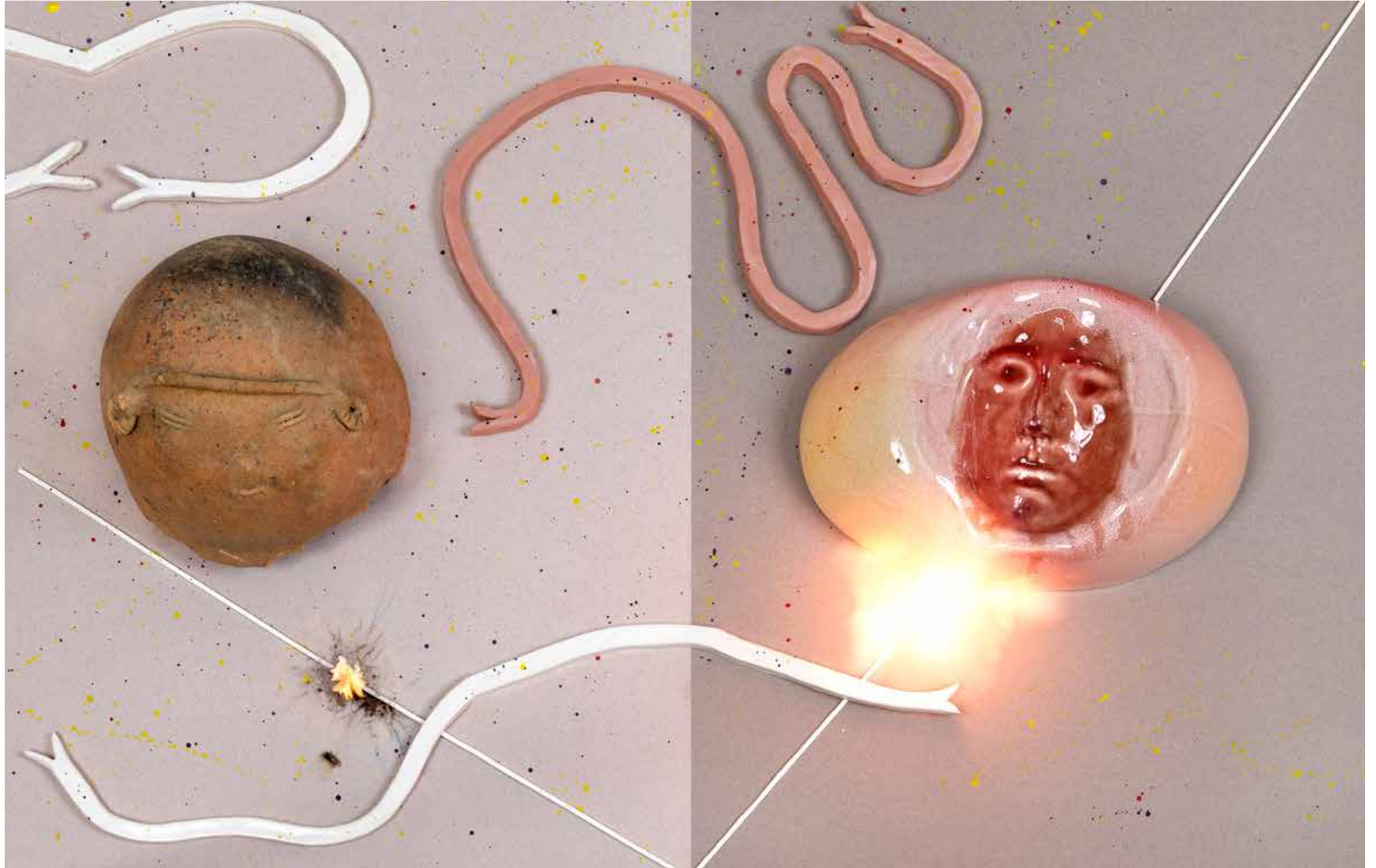


ETHER PLANE ~ MATERIAL PLANE

10/12

Aufbahrung Warteraum 2

ETHER PLANE~
MATERIAL PLANE
Hahnemuhle Museum
etching paper, 350 gms
Serie 2 (3 diagrams)
60x100cm



ETHER PLANE ~ MATERIAL PLANE

11/12

1
Burial Urn, head/top
South America,
500-1500 AD
Terracotta,
25x25x20 cm
Collection Galerie Walu, CH



1

2
ABSTRACTION OF A FORM,
SHAPE OR PRESENCE (2)
Glazed ceramics
30x21x12 cm



2