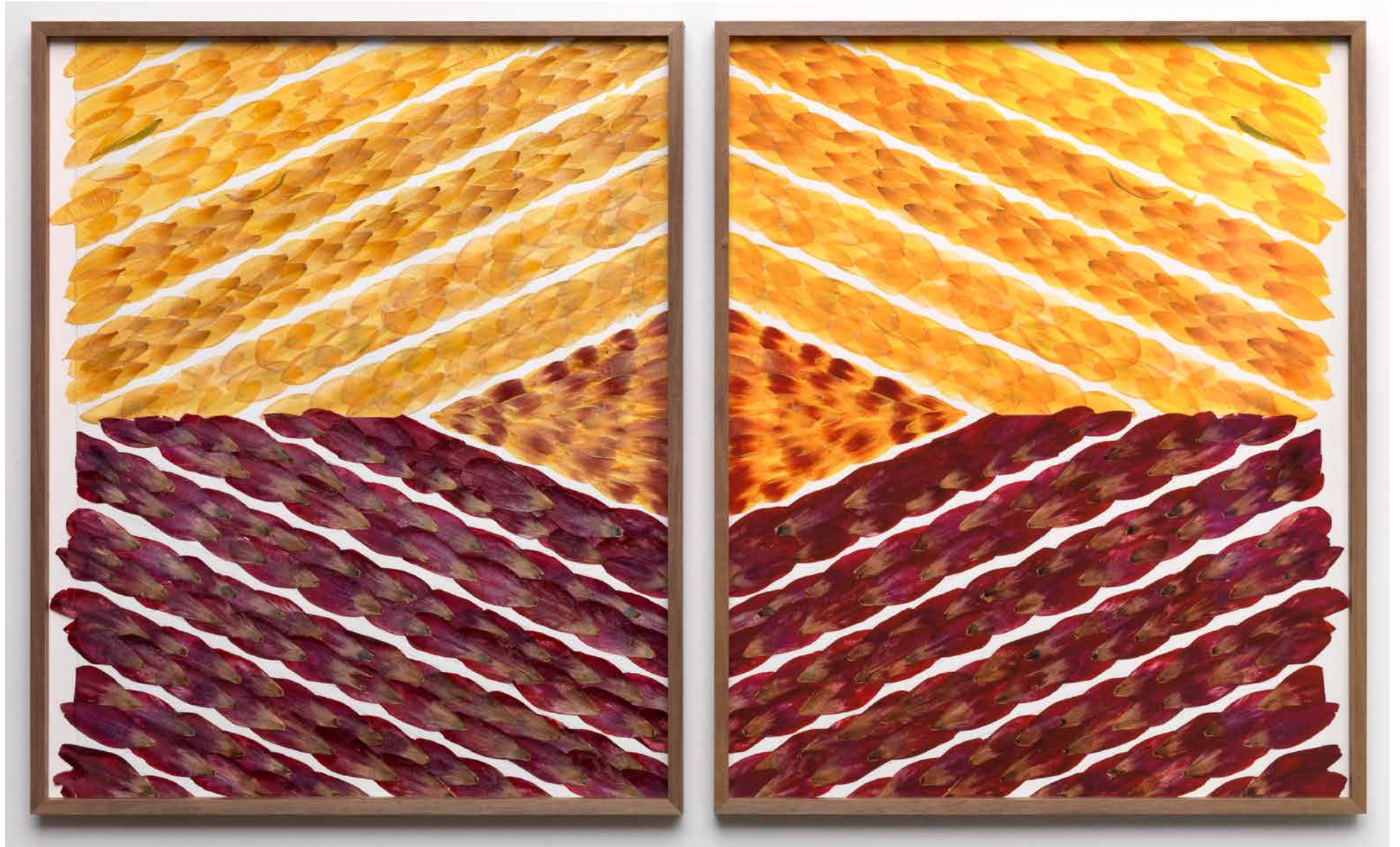


## TAMPAN TULIP

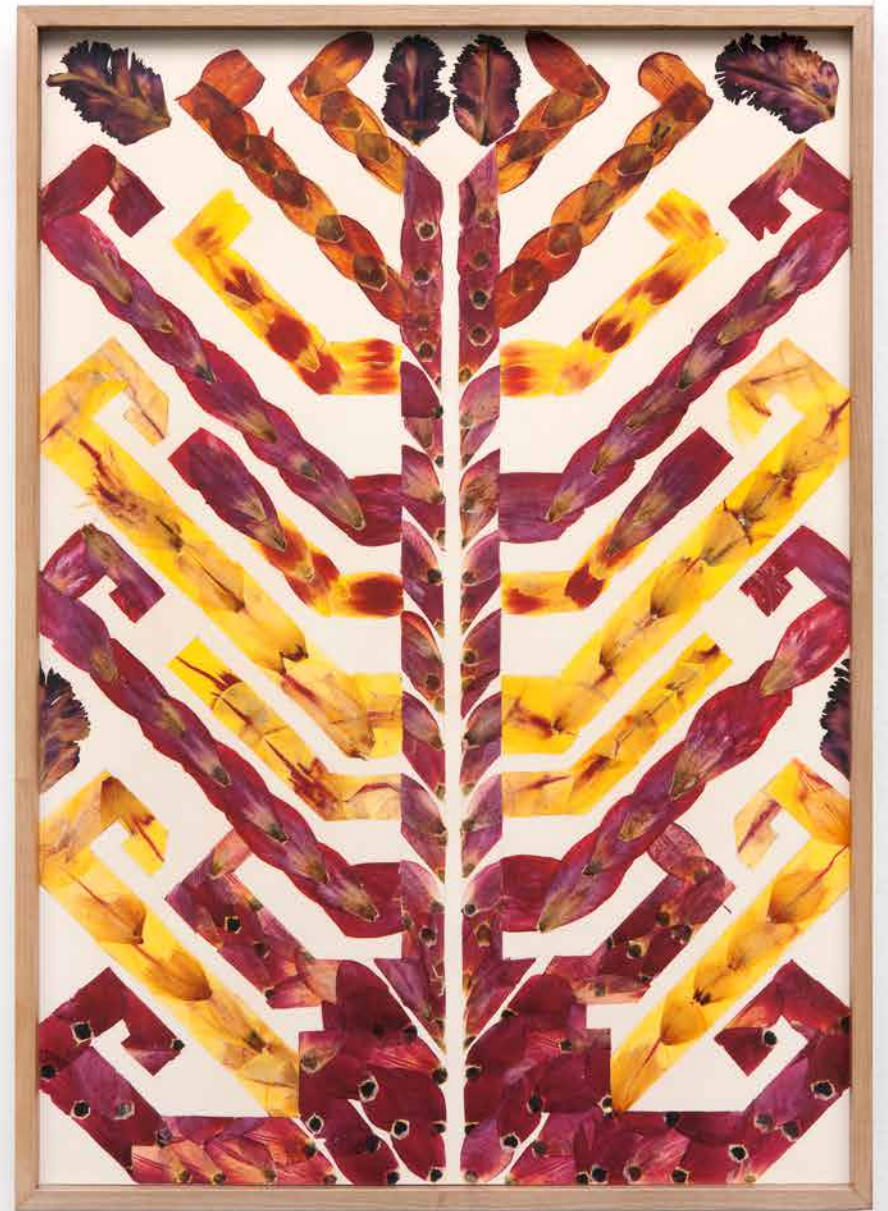
2014 – ongoing

Series of collages made from pressed tulip petals, with motifs taken from the Tampan, small square-shaped woven cloths that were exchanged during important rites of passage. Tampan are found in the Lampung region of southern Sumatra, a crucial trade route since antiquity, which has long been a crossroads of cultures and artistic traditions. Tampan were owned and used by Lampung families for ritual occasions and to assist each individual to progress through the diverse ceremonies that marked the various stages of life.

- > [View process](#)
- > [Open sketches](#)
- > [Download pdf](#)



TAMPAN KALIANDA (2)  
Tulip collage  
Wooden frame  
70x50 (2x)



## TAMPAN TULIP

Rethinking HOME  
Nieuwe Dakota, Amsterdam  
Koneksi-Connectie  
2016

For Rethinking HOME, an exhibition showing Indonesian and Dutch artists, Tee extended her research into Indonesian woven 'ship cloths' called Palepai and Tampan. Travelling to Lampung, Indonesia, she sought to explore these family heirlooms, which predominantly feature a ship with a mast that often branches out into a tree of life – evocative of human souls continuing on to new lives. The designs' deeper meaning, the subject of migration, is of particular interest to Tee. Her father migrated with his parents and sister to the Netherlands from Indonesia on a ship in the 1950s.

Rethinking HOME was generously supported by the Mondriaan Fund, curated by Agung Hujatnikajennong and Christine van den Bergh.



TAMPAN SHIP OF SOULS  
Tulip petals collage on  
paper  
190 x 170 cm



TAMPAN TULIP  
04/06

TAMPAN TREE OF LIFE  
Tulip petals collage on  
paper  
165 x 150 cm



TAMPAN TULIP  
05/06

TAMPAN WOMB OF TIME  
Tulip Petals collage on  
paper  
170 x 165 cm



TAMPAN TULIP  
06/06